

Type .....	Single and double acting pneumatic micro-cylinders, with or without magnetic piston
Standards .....	Main dimensions according to <b>ISO 6432</b> - CETOP RP 52 P
Cushioning .....	With elastic ring in end position
Rated temperature .....	-20...80 °C (-4...176 °F)
Fluid .....	Filtered compressed air with or without lubrication
Working pressure .....	0,5...10 bar (7,3...145 psi)
Proximity switch .....	See page 1.2.2.2
Mounting and accessories .....	Each micro-cylinder includes a mounting nut and a rod nut
Materials .....	Aluminum end caps, stainless steel tube and piston rod, PUR seals

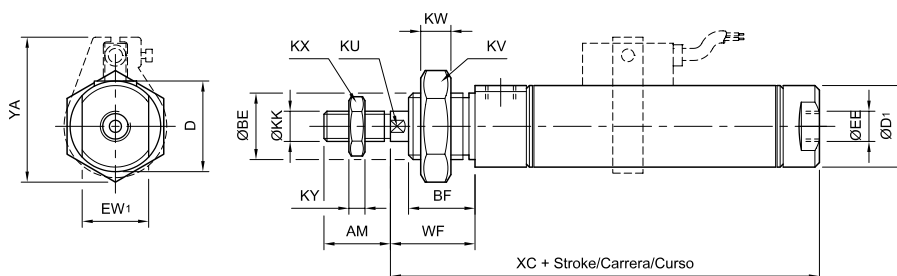


Ø	Single acting	Single acting rear spring	Double acting
8	0.001.510.---	0.001.520.---	0.001.530.---
10	0.002.510.---	0.002.520.---	0.002.530.---
12	0.003.510.---	0.003.520.---	0.003.530.---
16	0.004.510.---	0.004.520.---	0.004.530.---
20	0.005.510.---	0.005.520.---	0.005.530.---
25	0.006.510.---	0.006.520.---	0.006.530.---

Strokes Single acting	Strokes Double acting	Min. stroke with 1 sensor	Min. stroke with 2 sensors
10, 25, 50	10, 25, 40, 50, 80, 100	15	25
10, 25, 50	10, 25, 40, 50, 80, 100	5	20
10, 25, 50	10, 25, 40, 50, 80, 100, 125, 160, 200	15	25
10, 25, 50	10, 25, 40, 50, 80, 100, 125, 160, 200	5	20
10, 25, 50	10, 25, 40, 50, 80, 100, 125, 160, 200, 250, 300	5	20
10, 25, 50	10, 25, 40, 50, 80, 100, 125, 160, 200, 250, 300, 400, 500	5	20

Ø	Single acting magnetic piston	Single acting rear spring magnetic piston	Double acting magnetic piston
8	0.021.710.---	0.021.720.---	0.021.730.---
10	0.022.710.---	0.022.720.---	0.022.730.---
12	0.023.710.---	0.023.720.---	0.023.730.---
16	0.024.710.---	0.024.720.---	0.024.730.---
20	0.025.710.---	0.025.720.---	0.025.730.---
25	0.026.710.---	0.026.720.---	0.026.730.---

When ordering replace dashes by stroke value in mm, completing with zeros at the left if less than 3 digits.  
i.e.: a cylinder 0.026.710.--- with stroke 50 mm must be ordered as 0.026.710.050  
Strokes in table are according to ISO 4393 standard.  
However other strokes can be ordered on request.



Ø	AM	ØBE	BF	D	D1	EE	EW <sub>1</sub>	KK	KU	KV	KW	KX	KY	WF	XC	XC <sub>2</sub>	YA
8	12	M12 x 1,25	12	15	12	M5 x 0,8	10	M4 x 0,7		19	7	7	3,2	16	62	94	28
10	12	M12 x 1,25	12	15	12	M5 x 0,8	10	M4 x 0,7		19	7	7	3,2	16	62	94	30
12	16	M16 x 1,5	17	20	18	M5 x 0,8	15	M6 x 1	5	24	8	10	5	22	72	108,5	32
16	16	M16 x 1,5	17	20	18	M5 x 0,8	15	M6 x 1	5	24	8	10	5	22	78	113,5	36
20	20	M22 x 1,5	18	27	27	G 1/8"	22	M8 x 1,25	7	32	10	13	5	24	88,5	126	40
25	22	M22 x 1,5	22	27	27	G 1/8"	22	M10 x 1,25	9	32	10	17	6	28	93	130,5	45

Type .....	Single and double acting pneumatic micro-cylinders, with or without magnetic piston
Standards .....	<b>ISO 6432</b> - CETOP RP 52 P
Cushioning .....	Elastic ring or adjustable cushioning in end position
Rated temperature .....	-20...80 °C (-4...176 °F)
Fluid .....	Filtered compressed air with or without lubrication
Working pressure .....	0,5...10 bar (7,3...145 psi)
Proximity switch .....	See page 1.2.2.2
Mounting and accessories .....	Each micro-cylinder includes a mounting nut and a rod nut
Materials .....	Aluminum end caps, stainless steel tube and piston rod, PUR seals



Ø	Single acting	Single acting rear spring	Double acting
8	0.001.010.---	0.001.020.---	0.001.030.---
10	0.002.010.---	0.002.020.---	0.002.030.---
12	0.003.010.---	0.003.020.---	0.003.030.---
16	0.004.010.---	0.004.020.---	0.004.030.---
20	0.005.010.---	0.005.020.---	0.005.030.---
25	0.006.010.---	0.006.020.---	0.006.030.---

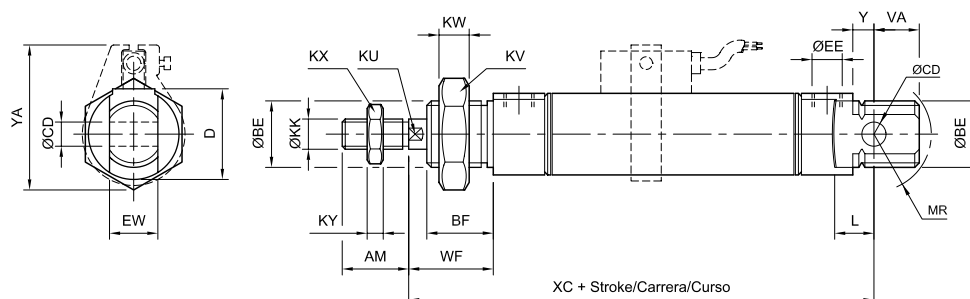
Strokes single acting	Strokes double acting
10, 25, 50	10, 25, 40, 50, 80, 100
10, 25, 50	10, 25, 40, 50, 80, 100
10, 25, 50	10, 25, 40, 50, 80, 100, 125, 160, 200
10, 25, 50	10, 25, 40, 50, 80, 100, 125, 160, 200
10, 25, 50	10, 25, 40, 50, 80, 100, 125, 160, 200, 250, 300
10, 25, 50	10, 25, 40, 50, 80, 100, 125, 160, 200, 250, 300, 400, 500

Ø	Single acting magnetic piston	Single acting rear spring magnetic piston	Double acting magnetic piston	Double acting with cushioning and magnetic piston
8	0.021.210.---	0.021.220.---	0.021.230.---	
10	0.022.210.---	0.022.220.---	0.022.230.---	
12	0.023.210.---	0.023.220.---	0.023.230.---	
16	0.024.210.---	0.024.220.---	0.024.230.---	0.024.260.---
20	0.025.210.---	0.025.220.---	0.025.230.---	0.025.260.---
25	0.026.210.---	0.026.220.---	0.026.230.---	0.026.260.---

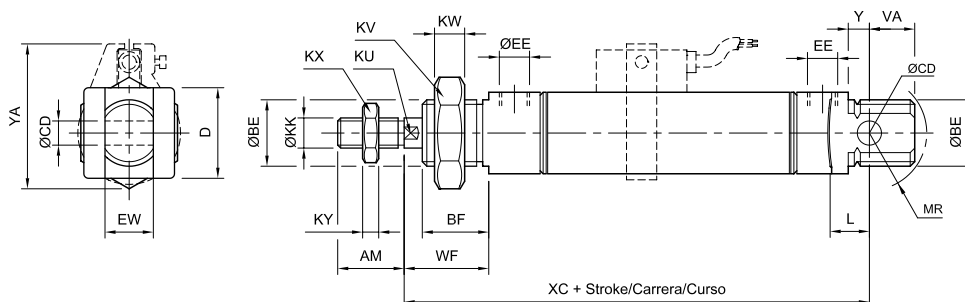
Min. stroke with 1 sensor	Min. stroke with 2 sensors
20	30
20	20
15	25
5	20
5	20
5	20

When ordering replace dashes by stroke value in mm, completing with zeros at the left if less than 3 digits.  
i.e.: a cylinder 0.026.210.- - - with stroke 50 mm must be ordered as 0.026.210.050  
Strokes in table are according to ISO 4393 standard.  
However other strokes can be ordered on request.

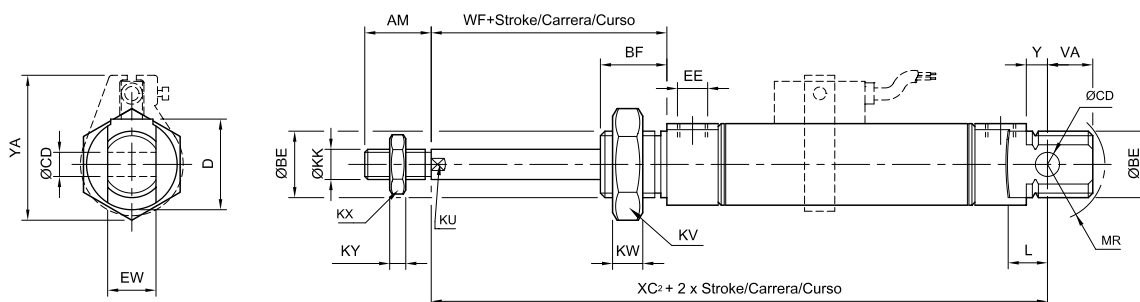
Single or double acting



Double acting with adjustable cushioning



Single acting with rear spring return



Ø	AM	ØBE	BF	D	ØCD	EE	EW	ØKK	KU	KV	KW	KX	KY	L	MR	VA	WF	XC	XC <sub>2</sub>	Y	YA
8	12	M12 x 1,25	12	15	4	M5 x 0,8	8	M4 x 0,7		19	7	7	3,2	6	12	10	16	64	96	2	28
10	12	M12 x 1,25	12	15	4	M5 x 0,8	8	M4 x 0,7		19	7	7	3,2	6	12	10	16	64	96	2	30
12	16	M16 x 1,5	17	20	6	M5 x 0,8	12	M6 x 1	5	24	8	10	5	9	13	14	22	75	111,5	3	32
16	16	M16 x 1,5	17	20	6	M5 x 0,8	12	M6 x 1	5	24	8	10	5	9	15,5	13	22	82	117,5	4	36
20	20	M22 x 1,5	18	27	8	G 1/8"	16	M8 x 1,25	7	32	10	13	5	12	17,5	15	24	95	132,5	3	40
25	22	M22 x 1,5	22	27	8	G 1/8"	16	M10 x 1,25	9	32	10	17	6	12	19	15	28	104	141,5	7	45

Type .....	Double acting double-ended rod pneumatic micro-cylinders, with magnetic piston
Standards .....	Main dimensions according to <b>ISO 6432</b> - CETOP RP 52 P
Cushioning .....	Elastic ring or adjustable cushioning in end position
Rated temperature .....	-20...80 °C (-4...176 °F)
Fluid .....	Filtered compressed air with or without lubrication
Working pressure .....	0,5...10 bar (7,3...145 psi).
Proximity switch .....	See page 1.2.2.2
Mounting and accessories .....	Each micro-cylinder includes a mounting nut and a rod nut
Materials .....	Aluminum end caps, stainless steel tube and piston rod, PUR seals



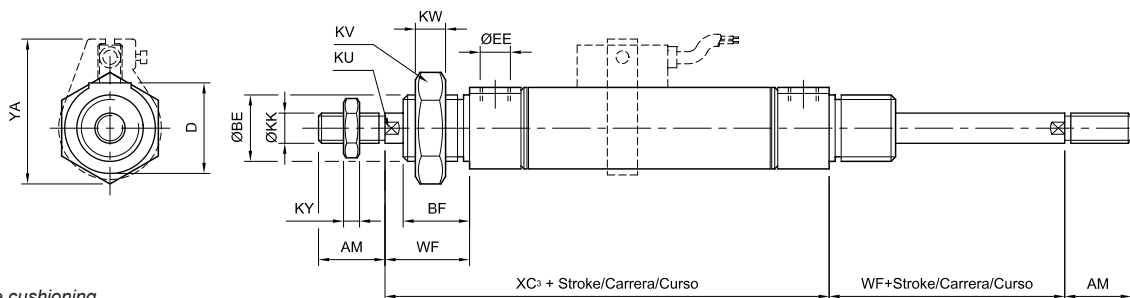
Ø	Double acting	Double acting with cushioning
16	0.024.330.---	0.024.360.---
20	0.025.330.---	0.025.360.---
25	0.026.330.---	0.026.360.---

Strokes
10, 25, 40, 50, 80, 100, 125, 160
10, 25, 40, 50, 80, 100, 125, 160, 200
10, 25, 40, 50, 80, 100, 125, 160, 200, 250, 300

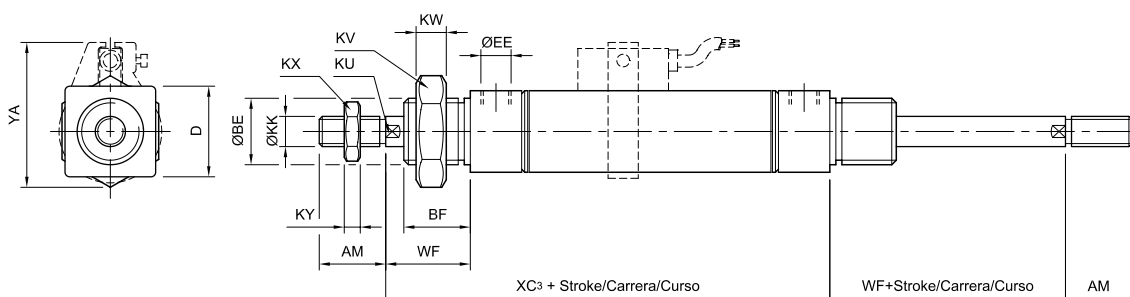
When ordering replace dashes by stroke value in mm, completing with zeros at the left if less than 3 digits.  
i.e.: a cylinder 0.026.330.- - with stroke 50 mm must be ordered as 0.026.330.050  
Strokes in table are according to ISO 4393 standard.  
However other strokes can be ordered on request.

- 5 mm minimum stroke with 1 sensor
- 20 mm minimum stroke with 2 sensors

Without adjustable cushioning

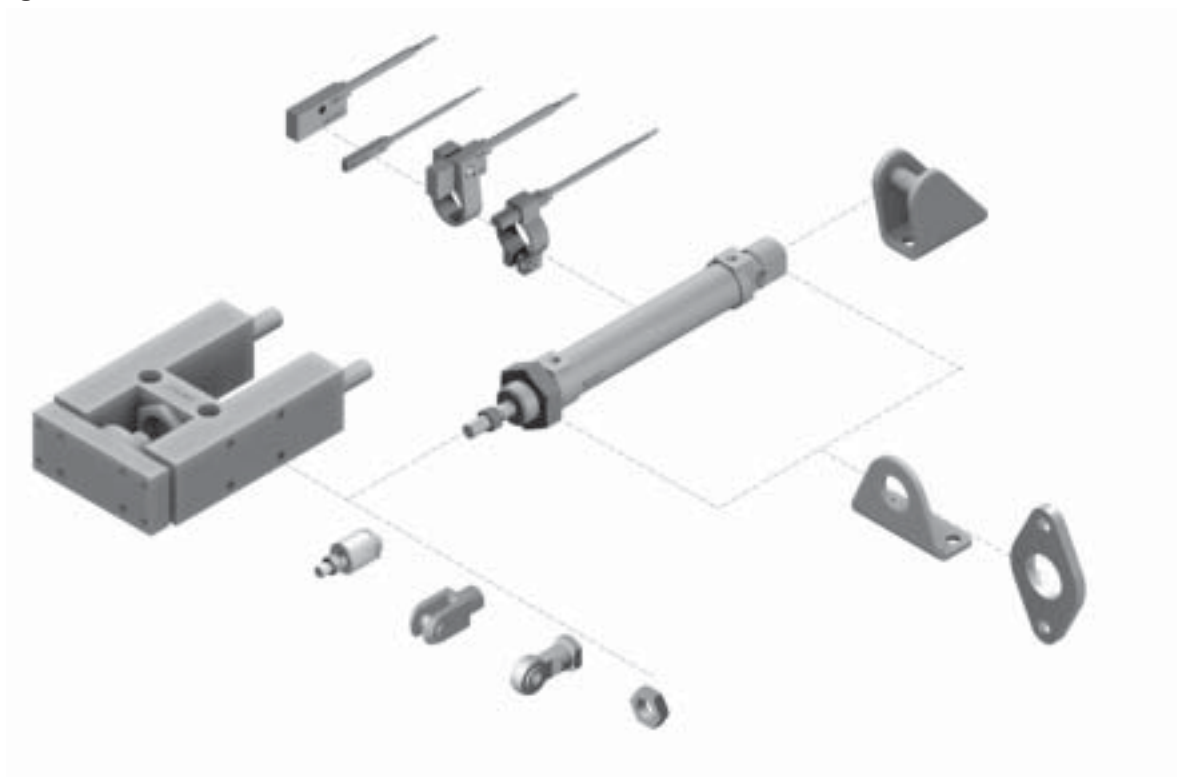


With adjustable cushioning



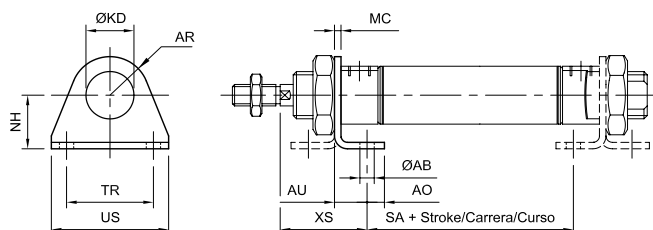
Ø	AM	ØBE	BF	D	EE	ØKK	KU	KV	KW	KX	KY	WF	XC <sub>3</sub>	YA
16	16	M16 x 1,5	17	20	M5 x 0,8	M6 x 1	5	24	8	10	5	22	78	36
20	20	M22 x 1,5	18	27	G 1/8"	M8 x 1,25	7	32	10	13	5	24	92	40
25	22	M22 x 1,5	22	27	G 1/8"	M10 x 1,25	9	32	10	17	6	28	97	45

### Mountings and accessories



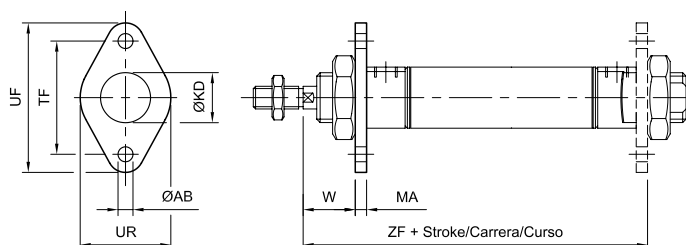
### Foot mounting

Ø	MiCRO
8-10	0.001.000.001
12-16	0.003.000.001
20-25	0.005.000.001



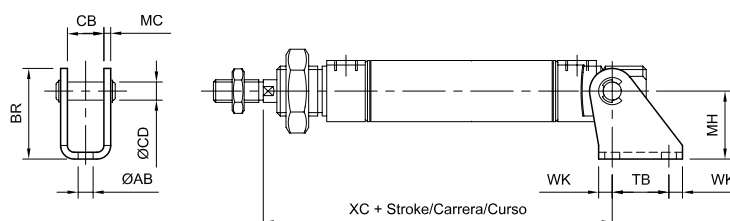
### Flange mounting

Ø	MiCRO
8-10	0.001.000.003
12-16	0.003.000.003
20-25	0.005.000.003

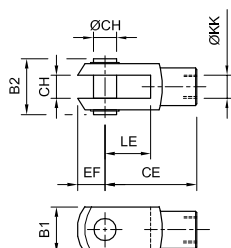


### Clevis foot mounting

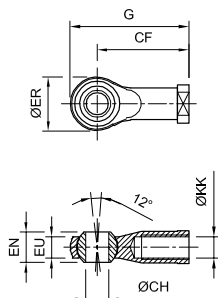
Ø	MiCRO
8-10	0.001.000.006
12-16	0.003.000.006
20-25	0.005.000.006



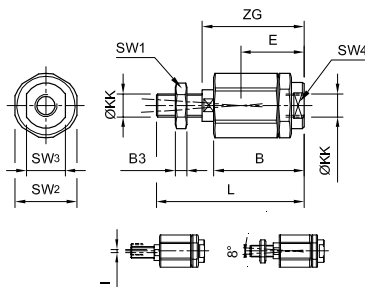
### Rod clevis



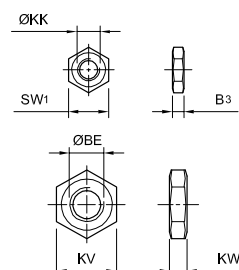
### Rod eye



### Self aligning rod coupler



### End cover and piston rod nuts



Ø	MiCRO
8-10	0.001.000.010
12-16	0.003.000.010
20	0.005.000.010
25	0.007.000.010

Ø	MiCRO
25	0.007.000.012

Ø	MiCRO
8-10	0.001.000.023
12-16	0.003.000.023
20	0.005.000.023
25	0.007.000.023

Ø	MiCRO
M 4 x 0,7	0.001.000.011
M 6 x 1	0.003.000.011
M 8 x 1,25	0.005.000.011
M 10 x 1,25	0.007.000.011
M 12 x 1,25	0.008.000.011
M 16 x 1,5	0.009.000.011
M 22 x 1,5	0.006.000.011

Ø	ØAB	AO	AR	AU	B	BE	B <sub>1</sub>	B <sub>2</sub>	B <sub>3</sub>	BR	CB	ØCD	CE	CF	CH	E	EF	EN	ER	EU	G	I	KD	ØKK
8-10	4,5	5	11	10	20	M12	8	12	3,2	25	8,1	4	16		4	16	5					1	12,1	M 4 x 0,7
12-16	5,5	6	13,5	12,5	21,5	M16	12	17	5	32,5	12,1	6	24		6	15,5	7					1	16,1	M 6 x 1
20	6,6	8	18	15	33	M22	16	21	5	40	16,1	8	32		8	20,5	10					1	22,1	M 8 x 1,25
25	6,6	8	18	15	46	M22	20	25	6	40	16,1	8	40	43	10	31	12	14	28	10,5	57	2	22,1	M 10 x 1,25

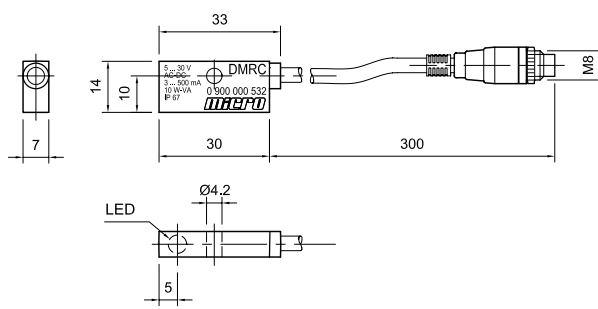
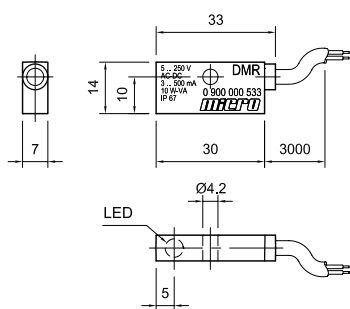
Ø	KV	KW	L	LE	MA	MC	MH	NH	SA	SW <sub>1</sub>	SW <sub>2</sub>	SW <sub>3</sub>	SW <sub>4</sub>	TB	TF	TR	UF	UR	US	W	WK	XC	XS	ZF	ZG
8-10	19	7	33	8	3	2	20	16	30	7	12,7	6	4	14	30	25	40	25	35	13	4	64	24	65	25
12	24	8	37	12	4	2,5	25	20	26	10	14,5	7	5	20	40	32	52	30	42	18	5	75	32	72	25
16	24	8	37	12	4	2,5	25	20	36	10	14,5	7	5	20	40	32	52	30	42	18	5	82	32	82	25
20	32	10	49	16	5	3	30	25	42	13	19	11	7	25	50	40	66	40	54	19	6	95	36	95	34
25	32	10	69,5	20	5	3	30	25	45	17	32	19	12	25	50	40	66	40	54	23	6	104	40	102	49,5

### Proximity switch DMR series

Type	Voltage	Current	Power	LED	Degree of protection	MiCRO
DMR	5...250 V AC/DC	3...500 mA	10 W/VA	●	IP 67	0.900.000.533
DMRC	5...30 V AC/DC	3...500 mA	10 W/VA	●	IP 67	0.900.000.532
2 m cable length with female M8x1 connector						0.900.000.531

DMR model has 3 m length cable; DMRC model has 300mm length cable with M8x1 male connector.

With polarity reversal protection (the sensor detects but the LED does not light).



### Proximity switch mounting bracket

Ø	MiCRO
8	0.021.000.017
10	0.022.000.017
12	0.023.000.017
16	0.024.000.017
20	0.025.000.017
25	0.026.000.017

